



# **SOUTH AUSTRALIAN ECONOMIC INDICATORS**

EMBARGO: 11:30AM (CANBERRA TIME) FRI 1 OCT 1999

## **C O N T E N T S**

	<i>page</i>
Notes .....	2
REVIEW	
South Australian overview .....	3
Selected features .....	4
TABLES	
List of tables .....	5
Statistical summary .....	6
State summary .....	8
State accounts .....	9
International accounts .....	10
Consumption and investment .....	14
Production .....	16
Prices .....	20
Labour force and demography .....	21
Income .....	24
Financial markets .....	25
ADDITIONAL INFORMATION	
Publications source index .....	26

- For more information about these and related statistics, contact Rachel Smith on Adelaide 08 8237 7395, or refer to the back cover of this publication.

## NOTES

FORTHCOMING ISSUES	<table border="0"> <thead> <tr> <th style="text-align: left;"><i>ISSUE</i></th> <th style="text-align: left;"><i>RELEASE DATE</i></th> </tr> </thead> <tbody> <tr> <td>November 1999</td> <td>1 November 1999</td> </tr> <tr> <td>December 1999</td> <td>1 December 1999</td> </tr> <tr> <td>January 2000</td> <td>23 December 1999</td> </tr> <tr> <td>February 2000</td> <td>1 February 2000</td> </tr> <tr> <td>March 2000</td> <td>1 March 2000</td> </tr> <tr> <td>April 2000</td> <td>3 April 2000</td> </tr> </tbody> </table>	<i>ISSUE</i>	<i>RELEASE DATE</i>	November 1999	1 November 1999	December 1999	1 December 1999	January 2000	23 December 1999	February 2000	1 February 2000	March 2000	1 March 2000	April 2000	3 April 2000
<i>ISSUE</i>	<i>RELEASE DATE</i>														
November 1999	1 November 1999														
December 1999	1 December 1999														
January 2000	23 December 1999														
February 2000	1 February 2000														
March 2000	1 March 2000														
April 2000	3 April 2000														
ABOUT THIS PUBLICATION	<p><i>South Australian Economic Indicators</i> is a monthly publication which contains the latest available data at the time of preparation for a range of statistical series that have been identified as indicators of economic activity in this State. In a number of cases the figures presented are preliminary and subject to revision in subsequent issues.</p>														
CHANGES IN THIS ISSUE	<p>There are no changes in this issue.</p>														
SYMBOLS AND OTHER USAGES	<table border="0"> <tr> <td>n.a.</td> <td>not available</td> </tr> <tr> <td>n.y.a.</td> <td>not yet available</td> </tr> <tr> <td>*</td> <td>subject to sampling variability too high for most practical purposes</td> </tr> <tr> <td>. .</td> <td>not applicable</td> </tr> <tr> <td>0, 0.0</td> <td>nil, or rounded to zero</td> </tr> </table>	n.a.	not available	n.y.a.	not yet available	*	subject to sampling variability too high for most practical purposes	. .	not applicable	0, 0.0	nil, or rounded to zero				
n.a.	not available														
n.y.a.	not yet available														
*	subject to sampling variability too high for most practical purposes														
. .	not applicable														
0, 0.0	nil, or rounded to zero														
ROUNDING	<p>Where figures have been rounded, discrepancies may occur between sums of the component items and totals.</p>														
INFORMATION	<p>All data are original, unless otherwise stated. More detailed information on each series, including explanatory and technical notes, can be obtained from other Australian Bureau of Statistics publications or alternative data sources. To assist those seeking further information a source publication for each of the series has been documented in the statistical summary.</p>														

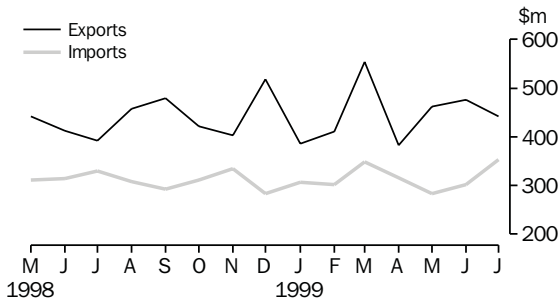
I. Crettenden  
Regional Director  
South Australia

## OVERVIEW

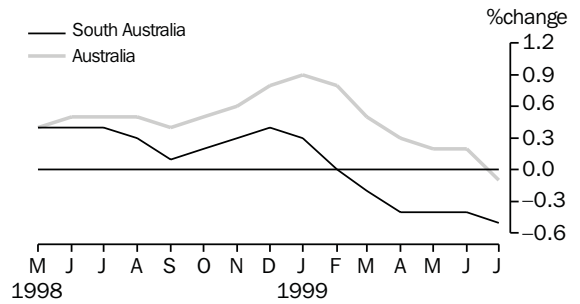
INTERNATIONAL ACCOUNTS	<p>The value of merchandise exports, where the final stage of production was in South Australia, was \$442.5m for July 1999. This represents a reduction from June 1999 of 7.1% but is equivalent to the overall monthly average for 1998-99 (\$445m). Export shipments of fish and crustaceans in July 1999 was well above average at \$29.2m.</p> <p>The value of merchandise imports released from Customs control in South Australia was \$353.2m in July 1999. This was an increase of 17.2% on July 1999.</p>
CONSUMPTION AND INVESTMENT	<p>The trend estimate for retail turnover continued to decrease in July 1999. This was the fifth consecutive month of negative growth. The clothing and soft good retailing and hospitality and services groups recorded positive growth rates for the month; these categories have shown consecutive increases for the previous seven and six months respectively. In original terms retail turnover for July 1999 was \$853.0m.</p> <p>The trend estimate for new motor vehicle registrations for July 1999 was 4,082. This was the fourth consecutive fall since February 1999 and is 12.5% lower than the level of 12 months ago (4,665).</p> <p>The trend estimate at current prices for private new capital expenditure has continued to fall; the June quarter 1999 figure of \$503.0m was a decrease of 7.5% from March quarter 1999 and a decrease of 33.3% from the June quarter 1998.</p>
PRODUCTION	<p>The trend for total dwelling units continues to grow strongly and is now 18.7% higher than the last low in November 1998. The rate of increase in the trend for private sector houses has slowed to 0.8% in July.</p>
PRICES	<p>The Consumer Price Index (all groups) in Adelaide increased 0.7% from the March quarter 1999 to be 123.6 in the June quarter 1999.</p>
LABOUR FORCE AND DEMOGRAPHY	<p>The trend estimate of employed persons in South Australia has increased since June 1998. The estimate for August 1999 (663,000) is 3.3% higher than the level of 12 months ago (641,900).</p> <p>The trend estimate of the unemployment rate for South Australia has generally decreased since July 1998, reaching 8.3% in August 1999. A year earlier, the rate was higher at 10.0%.</p>
FINANCIAL MARKETS	<p>The trend estimate of the value of new housing commitments (excluding alterations and additions) increased 2.9% in July, continuing the growth which commenced in October 1998. Seasonally adjusted, the value rose 3.8% to \$330.0m lifting the series 24.1% above the July 1998 figure.</p>

# SELECTED FEATURES

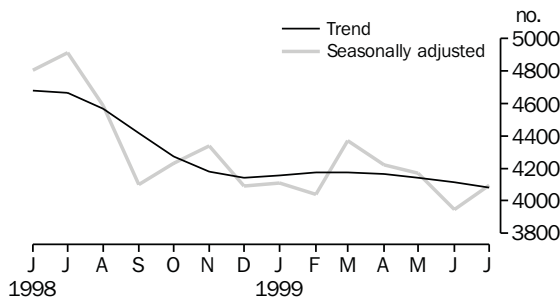
MERCHANDISE EXPORTS AND IMPORTS



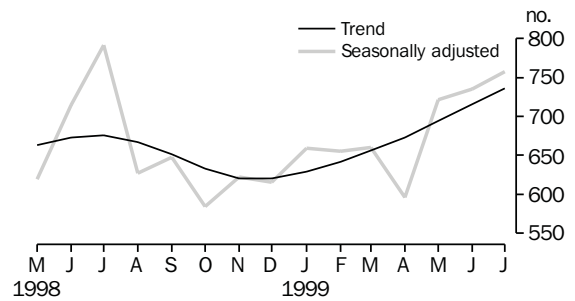
RETAIL TURNOVER: TREND



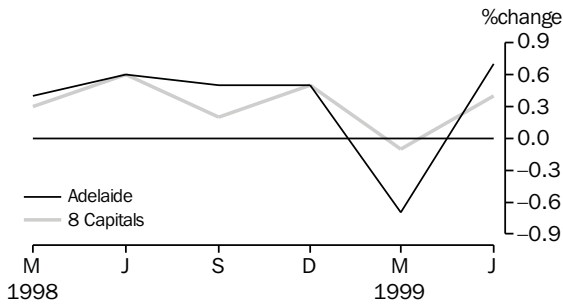
NEW MOTOR VEHICLE REGISTRATIONS



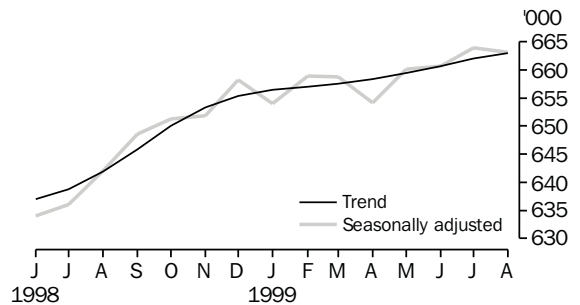
DWELLING UNITS APPROVED



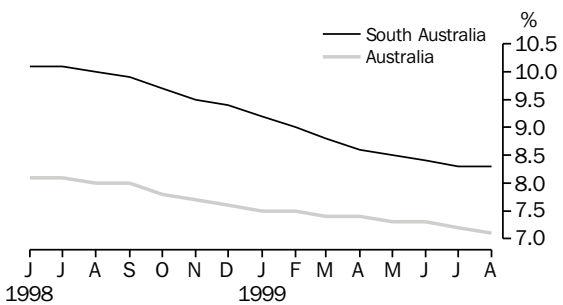
CONSUMER PRICE INDEX



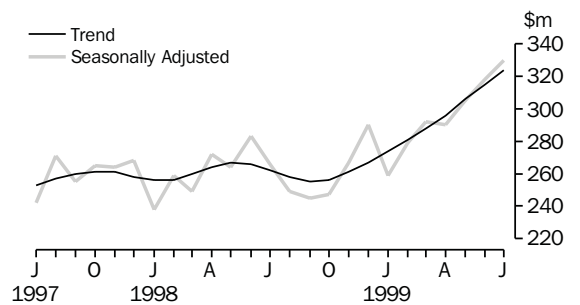
EMPLOYED PERSONS



UNEMPLOYMENT RATE: TREND



SECURED HOUSING FINANCE COMMITMENTS (a)



(a) Excludes alterations and additions. Includes refinancing.

## LIST OF TABLES

			Page
STATISTICAL SUMMARY	<b>1</b>	Statistical summary	6
	<b>2</b>	State summary	8
STATE ACCOUNTS	<b>3</b>	State accounts at current prices	9
	<b>4</b>	State accounts at chain volume measures	9
INTERNATIONAL ACCOUNTS	<b>5</b>	Merchandise exports, by selected commodity group	10
	<b>6</b>	Merchandise exports, by selected countries	11
	<b>7</b>	Merchandise exports, by industry of origin	12
	<b>8</b>	Merchandise imports, by selected commodity group	13
CONSUMPTION AND INVESTMENT	<b>9</b>	Turnover of retail establishments, by industry—trend	14
	<b>10</b>	New motor vehicle registrations, by type of vehicle	14
	<b>11</b>	Actual private new capital expenditure, by selected industry and type of asset	15
	<b>12</b>	Tourist accommodation	15
PRODUCTION	<b>13</b>	Building approvals	16
	<b>14</b>	Building commencements	17
	<b>15</b>	Value of building work done and completed during period	18
	<b>16</b>	Production, livestock products and selected commodities	19
PRICES	<b>17</b>	Consumer price index, by group—Adelaide	20
LABOUR FORCE AND DEMOGRAPHY	<b>18</b>	Estimated resident population and components of population change	21
	<b>19</b>	Births, deaths, marriages and divorces	21
	<b>20</b>	Civilian labour force status	22
	<b>21</b>	Civilian labour force, unemployment and participation rates	23
INCOME	<b>22</b>	Average weekly earnings of employees	24
FINANCIAL MARKETS	<b>23</b>	Secured housing finance commitments	25
	<b>24</b>	Finance commitments	25

Indicator	Period	South Australia			Australia			SA as a % of Aust.	Source index
		Number	% change from		Number	% change from			
			Previous period	Same period previous year		Previous period	Same period previous year		
<b>State accounts</b>									
Domestic final demand									
Current prices trend (\$m)	Jun qtr 99	10 292	0.0	0.8	153 864	1.4	6.0	6.7	(1)
Chain volume measures trend (\$m)	Jun qtr 99	10 111	-0.1	-0.2	150 862	1.0	4.6	6.7	(1)
Private final consumption expenditure									
Current prices trend (\$m)	Jun qtr 99	6 434	0.4	3.2	90 209	1.4	6.3	7.1	(1)
Chain volume measures trend (\$m)	Jun qtr 99	6 314	-0.1	1.9	88 735	1.2	5.1	7.1	(1)
Private gross fixed capital formation									
Current prices trend (\$m)	Jun qtr 99	1 502	-1.0	-10.2	29 214	0.5	3.2	5.1	(1)
Chain volume measures trend (\$m)	Jun qtr 99	1 486	-0.4	-10.2	28 609	0.3	2.8	5.2	(1)
Compensation of employees									
Current prices trend (\$m)	Jun qtr 99	4 944	2.0	5.0	73 620	1.5	6.4	6.7	(1)
<b>International accounts</b>									
Exports (\$m)	Jul 99	442.5	-7.1	12.9	7 138.7	3.4	-4.5	6.2	(2)
Imports (\$m)	Jun 99	353.2	17.2	7.1	8 180.6	0.5	-8.1	4.3	(2)
<b>Consumption and investment</b>									
Retail turnover									
Current prices original (\$m)	Jul 99	853.0	8.7	3.0	11 676.4	6.0	6.2	7.3	(3)
Current prices trend (\$m)	Jul 99	833.0	-0.5	-0.2	11 667.9	-0.1	5.8	7.1	(3)
1996-97 chain volume measures (\$m)	Jun qtr 99	2 458.4	-1.5	-1.8	34 265.0	1.7	5.0	7.2	(3)
New motor vehicle registrations									
Original (no.)	Jul 99	4 117	-12.3	-19.1	64 418	-19.0	-12.9	6.4	(4)
Trend (no.)	Jul 99	4 082	-0.8	-12.5	64 416	-0.7	-6.2	6.3	(4)
Private new capital expenditure									
Current prices original (\$m)	Jun qtr 99	504	-0.2	-37.2	10 691	2.5	-14.7	4.7	(5)
Current prices trend (\$m)	Jun qtr 99	503	-7.5	-33.3	10 478	-5.4	-11.5	4.8	(5)
Private new capital expenditure (\$m)	1998-99	2 277	..	-28.7	44 671	..	-3.3	5.1	(5)
Takings, licensed hotels, motels, guest houses and apartments with facilities (\$m)									
	Mar qtr 99	45.5	-8.7	3.4	1 003.1	-3.8	5.0	4.5	(6)
<b>Production</b>									
Dwelling unit approvals									
Original (no.)	Jul 99	842	-0.4	-6.5	14 826	4.7	3.1	5.7	(7)
Trend (no.)	Jul 99	736	2.8	8.9	13 692	2.0	5.3	5.4	(7)
Dwelling units commenced (no.)	Mar qtr 99	1 636	-16.7	-0.7	33 680	-9.5	-4.3	4.9	(8a)
Value of non-residential building approvals (\$m)									
	Jul 99	24.1	-9.1	-40.0	1 153.4	21.6	30.9	2.1	(7)
Value of total building activity									
Commenced (\$m)	Mar qtr 99	433.6	8.3	52.7	7 450.0	-11.1	-7.6	5.8	(8)
Work done (\$m)	Mar qtr 99	335.0	-14.2	1.4	7 979.2	-15.3	5.3	4.2	(8)
Work yet to be done (\$m)	Mar qtr 99	440.4	32.1	47.0	12 941.1	-0.5	-1.4	3.4	(8)
Value of engineering construction work done (\$m)									
	Mar qtr 99	218.8	-10.6	-28.0	4 324.1	-6.8	-2.0	5.1	(9)
Manufacturing production									
Red meat (tonnes)	Jun qtr 99	43 029	-5.0	-8.1	736 908	0.3	0.4	5.8	(11)
Mineral exploration expenditure (other than for petroleum) (\$m)									
	Jun qtr 99	12.8	68.4	6.7	195.0	16.6	-25.7	6.6	(12)

Indicator	Period	South Australia			Australia			SA as a % of Aust.	Source index
		Number	% change from		Number	% change from			
			Previous period	Same period previous year		Previous period	Same period previous year		
<b>Prices(a)</b>									
CPI—All groups (index no.)	Jun qtr 99	123.6	0.7	1.0	122.3	0.4	1.1	..	(13)
Price index of materials used in house building (index no.)	Jun qtr 99	125.2	0.1	0.9	119.2	-0.3	0.2	..	(14)
Price index of materials used in building other than houses (index no.)	Jun qtr 99	115.6	0.0	0.0	115.4	0.2	0.8	..	(15)
Price index of established houses (index no.)	Jun qtr 99	116.5	2.5	2.5	134.3	2.3	5.8	..	(16)
Price index of project homes (index no.)	Jun qtr 99	119.8	1.6	4.7	114.8	0.9	3.6	..	(16)
<b>Labour force and demography</b>									
Population (resident at end qtr) ('000)	Mar qtr 99	1 491.9	0.2	0.5	18 918.0	0.4	1.3	7.9	(17)
Short-term overseas visitor arrivals (no.)	Jun 99	6 750	1.3	85.1	317 055	6.3	4.2	2.1	(21)
Short-term resident departures (no.)	Jun 99	12 365	-13.7	-7.5	289 250	10.2	2.5	4.3	(21)
Labour force									
Original ('000)	Aug 99	720.9	0.4	1.5	9 384.4	-0.7	1.3	7.7	(18)
Trend ('000)	Aug 99	722.9	0.1	1.3	9 476.2	0.1	1.0	7.6	(18)
Employed persons									
Original ('000)	Aug 99	659.9	-0.5	3.3	8 731.6	-1.1	2.3	7.6	(18)
Trend ('000)	Aug 99	663.0	0.1	3.3	8 801.3	0.2	2.0	7.5	(18)
Participation rate									
Original(b) (%)	Aug 99	60.1	0.2	0.4	62.5	-0.5	-0.1	..	(18)
Trend(b) (%)	Aug 99	60.3	0.0	0.3	63.1	0.0	-0.3	..	(18)
Unemployment rate									
Original(b) (%)	Aug 99	8.5	0.9	-1.6	7.0	0.4	-0.8	121.4	(18)
Trend(b) (%)	Aug 99	8.3	0.0	-1.7	7.1	-0.1	-0.9	116.9	(18)
Job vacancies ('000)	May 99	3.5	-16.4	30.4	71.1	6.9	-2.9	4.9	(19)
Average weekly overtime per employee working overtime (hours)	May 99	5.75	0.2	3.5	7.13	0.3	6.1	..	(19)
Industrial disputes ('000 working days lost)	Jun 99	1.7	88.9	112.5	28.1	67.3	-61.3	6.0	(20)
<b>Income</b>									
Average weekly earnings (full-time adults; ordinary time)									
Original (\$)	May 99	699.70	0.0	2.9	750.80	0.8	3.3	..	(22)
Trend (\$)	May 99	699.40	-0.2	2.1	749.40	0.6	2.9	..	(22)
Wage cost index (total hourly rate excluding bonuses)(c) (index no.)	Jun qtr 99	104.7	0.1	2.7	105.4	0.6	3.2	..	(23)
<b>Financial markets</b>									
Secured housing finance(d) (\$m)	Jul 99	319.0	-6.7	18.6	5 895.0	-6.2	18.9	5.4	(24)
Finance commitments									
Personal (\$m)	Jul 99	261.6	-14.1	4.8	4 097.9	-14.8	9.5	6.4	(25)
Commercial (\$m)	Jul 99	514.1	-30.4	1.8	14 499.2	-18.5	-12.9	3.5	(25)
Lease (\$m)	Jun 99	23.4	-42.4	-27.7	852.0	-28.3	-5.7	2.7	(25)
Interest rates									
Banks new housing loans(b) (%)	Aug 99	..	..	..	6.55	0.00	-0.15	..	(26)
Bank loans—small, medium business(b)(e) (%)	Aug 99	..	..	..	7.45	0.00	-0.25	..	(26)
Bank loans—large business(b) (%)	Aug 99	..	..	..	7.95	0.00	-0.10	..	(26)

(a) Base year of each index 1989-90=100.

(b) Change is shown in terms of percentage points.

(c) Base year of index Sep 1997=100.

(d) Excludes alterations and additions. Includes refinancing.

(e) Rate for business loans over \$50,000.

<i>Indicator</i>	<i>Period</i>	<i>NSW</i>	<i>Vic.</i>	<i>Qld</i>	<i>SA</i>	<i>WA</i>	<i>Tas.</i>	<i>NT</i>	<i>ACT</i>	<i>Source index</i>
SELECTED INDICATORS										
CPI—All groups(a) (index no.)	Jun qtr 99	123.0	121.5	123.1	123.6	120.8	122.5	122.7	121.5	(13)
Participation rate trend (%)	Aug 99	61.7	63.0	64.9	60.3	65.9	58.4	70.3	71.5	(18)
Unemployment rate trend (%)	Aug 99	6.4	7.5	7.9	8.3	6.4	8.9	3.8	5.6	(18)
Average weekly earnings (full-time adults; ordinary time) trend (\$)	May 99	792.70	734.90	703.60	699.40	750.90	696.30	752.30	836.80	(22)

## SELECTED INDICATORS PER HEAD OF POPULATION(b)

State final demand										
Chain volume measures trend (\$'000)	Jun qtr 99	8.2	7.9	7.6	6.8	8.2	6.6	10.2	14.9	(1)
Retail turnover										
Current prices original (\$)	Jul 99	629.3	605.0	623.4	571.7	617.8	556.5	715.9	736.2	(3)
Current prices trend (\$)	Jul 99	633.1	607.7	615.5	558.3	621.6	566.9	656.6	717.7	(3)
New motor vehicle registrations trend (no. per '000 population)	Jul 99	3.6	3.7	3.0	2.7	3.3	2.6	3.4	3.8	(4)
Private new capital expenditure										
Current prices trend (\$)	Jun qtr 99	544.6	586.6	524.6	337.1	775.9	238.1	863.6	236.1	(5)
Dwelling unit approvals										
Original (no. per '000 population)	Jul 99	0.770	0.828	0.772	0.564	1.099	0.336	0.682	0.450	(7)
Trend (no. per '000 population)	Jul 99	0.705	0.774	0.684	0.493	1.081	0.270	0.760	0.437	(7)
Secured housing finance(c) (\$)	Jul 99	389.7	283.5	247.0	213.8	359.1	140.3	265.3	326.7	(24)

## PERCENTAGE CHANGE FROM PREVIOUS PERIOD

State final demand										
Chain volume measures trend (%)	Jun qtr 99	2.1	1.2	0.8	-0.1	0.6	2.1	-5.9	0.8	(1)
Retail turnover										
Current prices original (%)	Jul 99	5.3	6.9	5.2	8.7	6.0	4.3	8.1	9.8	(3)
Current prices trend (%)	Jul 99	-0.3	0.7	-0.5	-0.5	-0.5	-0.3	0.3	0.2	(3)
New motor vehicle registrations trend (%)	Jul 99	1.0	-0.5	-3.1	-0.8	-2.8	-2.0	-3.5	1.0	(4)
Private new capital expenditure										
Current prices trend (%)	Jun qtr 99	-3.5	-2.4	-5.8	-7.5	-9.5	-0.9	-32.5	-17.0	(5)
Dwelling unit approvals										
Original (%)	Jul 99	6.8	17.5	4.3	-0.4	-14.6	79.5	-27.2	-2.1	(7)
Trend (%)	Jul 99	1.8	1.4	1.1	2.8	3.4	4.0	-3.7	-5.2	(7)
CPI—All groups (%)	Jun qtr 99	0.3	0.4	0.2	0.7	0.8	0.3	0.5	0.1	(13)
Participation rate trend(d) (%)	Aug 99	0.0	0.0	-0.1	0.0	0.0	-0.1	-0.3	0.1	(18)
Unemployment rate trend(d) (%)	Aug 99	0.0	0.0	-0.1	0.0	-0.1	-0.3	-0.2	-0.1	(18)
Average weekly earnings (full-time adults; ordinary time) trend (%)	May 99	1.3	0.2	0.5	-0.2	0.4	-0.2	0.1	-0.7	(22)
Secured housing finance (%)	Jul 99	-7.2	-7.8	-0.8	-6.7	-6.7	4.8	-7.3	-5.6	(24)

(a) Base year of index 1989-90 = 100.

(b) The latest quarterly estimate of Australian resident population has been used to calculate ratios for subsequent periods.

(c) Excludes alterations and additions. Includes refinancing.

(d) Change is shown in terms of percentage points.



### 3

#### STATE ACCOUNTS AT CURRENT PRICES

Period	Final consumption expenditure		Gross fixed capital formation		State final demand	Gross State product (I)	Compensation of employees
	Households	General government	Private	Public			
ANNUAL (\$m)							
<b>1995-96</b>	22 617	7 433	5 176	1 185	36 411	35 928	17 518
<b>1996-97</b>	22 920	7 477	5 772	1 274	37 444	36 434	18 140
<b>1997-98</b>	24 294	7 882	6 675	1 286	40 138	38 966	18 902
QUARTERLY, TREND (\$m)							
<b>1997-98</b>							
March	6 146	1 980	1 726	304	10 156	n.a.	4 722
June	6 233	1 999	1 690	289	10 211	n.a.	4 710
<b>1998-99</b>							
September	6 317	2 010	1 601	316	10 244	n.a.	4 723
December	6 374	2 011	1 542	346	10 273	n.a.	4 773
March	6 411	2 003	1 517	358	10 288	n.a.	4 848
June	6 434	1 989	1 502	371	10 292	n.a.	4 944

Source: Australian National Accounts: Quarterly State Details (Cat. no. 5206.0.40.001), and Australian National Accounts: State Accounts (Cat. no. 5220.0).

### 4

#### STATE ACCOUNTS AT CHAIN VOLUME MEASURES(a)

Period	Final consumption expenditure		Gross fixed capital formation		State final demand	Gross State product (I)
	Households	General government	Private	Public		
ANNUAL (\$m)						
<b>1995-96</b>	22 905	7 514	4 967	1 162	36 518	35 891
<b>1996-97</b>	22 920	7 477	5 772	1 273	37 444	36 434
<b>1997-98</b>	24 003	7 788	6 652	1 283	39 726	38 573
QUARTERLY, TREND (\$m)						
<b>1997-98</b>						
March	6 138	1 979	1 716	298	10 129	n.a.
June	6 199	1 987	1 662	286	10 129	n.a.
<b>1998-99</b>						
September	6 263	1 987	1 564	313	10 119	n.a.
December	6 304	1 978	1 508	345	10 127	n.a.
March	6 320	1 963	1 492	358	10 124	n.a.
June	6 314	1 949	1 486	371	10 111	n.a.

(a) Reference year for chain volume measures is 1996-97.

Source: Australian National Accounts: Quarterly State Details (Cat. no. 5206.0.40.001), and Australian National Accounts: State Accounts (Cat. no. 5220.0).

## 5

## MERCHANDISE EXPORTS, BY SELECTED COMMODITY GROUP(a)

<i>Period</i>	<i>Meat and meat preparations</i>	<i>Cereals and cereal preparations</i>	<i>Wine</i>	<i>Wool and sheepskins</i>	<i>Machinery</i>	<i>Metals and metal manufactures</i>	<i>Fish and crustaceans</i>	<i>Road vehicles, parts and accessories</i>	<i>Petroleum and petroleum products</i>	<i>Total</i>
	\$'000	\$'000	\$'000	\$'000	\$'000	\$'000	\$'000	\$'000	\$'000	\$'000
<b>1996-97</b>	182 478	745 227	397 949	260 974	378 923	542 204	191 093	655 881	286 458	5 009 345
<b>1997-98</b>	218 252	762 415	564 083	287 824	401 749	574 407	236 353	479 396	237 824	4 979 355
<b>1998-99</b>	198 507	628 707	693 657	211 248	384 443	543 686	252 592	652 010	154 425	5 341 793
<b>1997-98</b>										
February	21 189	81 091	43 674	17 710	27 617	41 123	18 253	19 097	18 197	364 226
March	23 933	76 734	55 440	26 154	37 500	51 720	22 850	37 642	19 792	474 970
April	20 323	97 030	50 539	16 054	30 937	48 037	21 581	24 260	12 089	410 224
May	19 757	66 147	58 188	28 786	41 200	44 539	18 447	30 767	18 406	440 938
June	16 188	83 309	52 876	17 049	25 411	49 813	21 084	24 268	13 434	412 631
<b>1998-99</b>										
July	11 886	51 175	48 323	17 802	37 239	36 741	23 828	44 144	8 909	391 917
August	12 036	57 675	54 365	14 136	30 391	51 467	30 657	43 037	20 669	457 962
September	17 730	46 101	70 084	21 737	30 230	39 773	28 826	82 634	12 086	478 849
October	20 302	37 462	72 262	23 109	28 835	39 298	16 321	45 615	19 012	421 250
November	23 420	12 520	40 014	23 410	33 813	44 046	15 738	76 332	8 740	402 198
December	21 957	84 612	48 409	21 800	39 439	46 039	18 732	72 038	22 904	517 949
January	12 512	93 036	39 131	10 991	20 713	32 232	20 641	17 334	3 544	386 099
February	19 308	43 302	50 983	18 309	29 483	47 209	20 912	23 346	8 932	410 956
March	17 378	73 094	66 839	16 754	29 515	58 773	18 415	102 036	11 714	554 199
April	12 617	38 467	56 313	10 319	41 312	39 931	20 369	26 728	4 080	382 390
May	16 087	42 140	69 482	20 138	34 714	57 282	20 328	28 122	19 003	461 543
June	13 273	49 123	77 453	12 742	28 760	50 894	17 824	90 645	14 832	476 481
<b>1999-00</b>										
July	11 457	32 650	55 724	9 823	28 936	53 170	29 222	41 127	21 380	442 450

(a) Final stage of production in South Australia.

Source: Unpublished data, International Merchandise Trade.

## 6

## MERCHANDISE EXPORTS, BY SELECTED COUNTRIES(a)

Period	European Union					East Asia				
	Unites States of America	Middle East	United Kingdom	Total European Union	New Zealand	Japan	China	Hong Kong	ASEAN	Total East Asia
	\$'000	\$'000	\$'000	\$'000	\$'000	\$'000	\$'000	\$'000	\$'000	\$'000
<b>1996-97</b>	707 871	563 409	304 645	641 308	382 103	611 870	244 917	234 547	615 943	2 030 435
<b>1997-98</b>	632 203	389 766	424 251	849 932	354 698	612 464	331 489	239 652	491 573	2 023 374
<b>1998-99</b>	704 670	640 319	476 248	928 100	388 095	625 849	302 180	219 350	432 646	1 898 026
<b>1997-98</b>										
February	33 828	32 808	28 219	69 543	29 889	36 854	36 830	23 072	20 162	137 812
March	63 876	57 910	33 353	78 020	37 792	48 425	37 418	21 220	39 874	180 733
April	38 373	52 361	39 893	78 611	35 943	45 057	12 599	14 654	21 024	127 024
May	43 378	27 970	46 314	99 584	32 077	51 107	28 785	20 116	25 054	160 370
June	52 213	30 122	35 019	68 106	31 172	55 368	22 009	14 993	26 900	154 564
<b>1998-99</b>										
July	49 983	36 832	37 794	66 756	36 659	47 898	11 003	19 773	25 676	127 478
August	34 075	33 052	46 093	82 475	33 707	75 232	23 384	16 548	45 343	183 754
September	87 466	53 605	47 456	82 522	32 194	72 491	26 358	16 476	24 026	161 882
October	39 435	43 420	50 012	84 179	31 677	41 429	33 269	20 642	29 472	145 414
November	85 490	33 540	23 911	43 607	29 428	33 475	39 460	19 539	41 004	163 881
December	72 375	108 906	31 536	82 409	31 828	52 344	17 915	25 466	39 024	172 897
January	25 730	91 222	27 983	62 250	20 912	26 299	31 133	16 119	19 791	114 334
February	33 065	39 031	32 558	78 213	29 617	52 745	20 986	21 833	35 769	157 441
March	83 983	87 010	48 802	96 079	34 227	62 499	29 294	17 954	47 442	189 081
April	45 093	34 532	36 364	73 470	29 922	33 779	17 751	15 274	41 850	133 730
May	50 172	41 235	44 124	95 824	31 753	73 580	29 013	16 041	35 990	189 407
June	97 804	37 935	49 616	80 318	46 169	54 077	22 613	13 686	47 261	158 729
<b>1999-00</b>										
July	54 485	31 570	38 746	79 742	38 365	74 077	16 637	16 746	27 750	165 513

(a) Final stage of production in South Australia.

Source: Unpublished data, International Merchandise Trade.

## 7

## MERCHANDISE EXPORTS, BY INDUSTRY OF ORIGIN(a)

Period	Manufacturing								Total
	Agriculture, forestry and fishing	Mining	Food, beverages and tobacco	Petroleum, coal, chemical associated product	Metal product	Machinery and equipment	Other manu- facturing	Other industries/ confidential	
	\$'000	\$'000	\$'000	\$'000	\$'000	\$'000	\$'000	\$'000	\$'000
<b>1996-97</b>	1 067 084	202 162	981 918	290 361	569 679	1 140 136	226 780	531 226	5 009 345
<b>1997-98</b>	1 181 589	137 851	1 205 265	292 175	615 344	994 597	262 815	289 719	4 979 355
<b>1998-99</b>	1 060 211	73 125	1 281 937	285 184	581 258	1 174 847	263 956	621 275	5 341 793
<b>1997-98</b>									
February	113 042	805	91 561	25 843	42 638	56 040	19 488	14 809	364 226
March	124 635	13 279	116 992	23 588	55 768	86 292	29 905	24 510	474 970
April	120 229	896	105 811	22 179	51 716	64 150	20 316	24 927	410 224
May	100 208	3 524	118 987	30 653	49 662	84 588	23 965	29 351	440 938
June	114 836	10 307	105 051	24 871	52 139	59 884	17 105	28 438	412 631
<b>1998-99</b>									
July	90 460	916	99 279	16 951	42 744	92 690	17 418	31 459	391 917
August	88 413	8 725	100 942	34 630	53 203	90 632	19 941	61 475	457 962
September	77 554	1 066	117 539	26 209	40 577	122 096	21 894	71 914	478 849
October	70 620	9 066	123 467	27 700	41 345	85 546	21 252	42 255	421 250
November	45 312	14 644	90 065	19 311	48 123	123 267	20 329	41 147	402 198
December	117 058	7 760	104 085	32 699	51 955	121 086	22 642	60 664	517 949
January	127 396	1 112	78 750	13 355	33 004	46 525	18 209	67 749	386 099
February	99 744	9 484	102 251	19 255	49 565	63 347	21 822	45 487	410 956
March	121 061	511	114 332	23 276	63 539	145 838	30 602	55 041	554 199
April	62 384	7 741	105 760	14 464	41 171	79 506	26 041	45 321	382 390
May	86 029	8 781	122 603	30 879	61 320	73 034	24 412	54 485	461 543
June	74 179	3 320	122 864	26 455	54 713	131 280	19 393	44 277	476 481
<b>1999-00</b>									
July	63 215	7 330	119 147	31 925	54 479	83 679	18 992	63 682	442 450

(a) Final stage of production in South Australia.

Source: Unpublished data, International Merchandise Trade.

## 8

## MERCHANDISE IMPORTS, BY SELECTED COMMODITY GROUP(a)

<i>Period</i>	<i>Food, beverages and tobacco</i>	<i>Petroleum and petroleum products</i>	<i>Chemicals</i>	<i>Textiles</i>	<i>Metals and metal manufactures</i>	<i>Machinery</i>	<i>Road vehicle parts and accessories</i>	<i>Other manufactured goods</i>	<i>Total</i>
	\$'000	\$'000	\$'000	\$'000	\$'000	\$'000	\$'000	\$'000	\$'000
<b>1996-97</b>	136 695	505 633	225 187	79 708	223 259	868 346	538 690	695 238	3 413 043
<b>1997-98</b>	148 771	445 218	274 741	93 815	280 562	1 061 260	772 203	739 266	3 940 198
<b>1998-99</b>	162 814	271 444	281 098	96 072	264 931	917 816	811 938	766 029	3 716 455
<b>1997-98</b>									
February	10 608	39 221	26 084	8 195	27 664	69 791	53 601	70 676	314 306
March	11 294	41 325	31 280	8 678	26 177	86 622	70 446	70 667	357 051
April	10 012	22 090	38 574	9 335	21 137	113 439	61 182	63 078	350 581
May	11 224	38 780	27 490	8 945	21 394	74 468	56 026	60 750	310 724
June	13 086	15 049	18 431	8 041	25 140	89 988	70 652	62 513	313 741
<b>1998-99</b>									
July	14 293	23 350	13 006	9 514	26 572	95 455	71 756	64 569	329 710
August	15 000	18 697	14 930	8 217	24 495	83 417	67 746	66 505	308 231
September	14 111	12 616	22 609	8 647	25 446	73 876	63 421	63 209	292 070
October	15 828	11 640	18 150	9 116	23 219	82 586	78 648	59 588	310 764
November	15 327	36 487	23 598	7 876	21 420	75 548	70 427	71 943	334 583
December	13 026	16 970	18 804	6 467	19 204	75 018	64 460	59 286	283 700
January	12 745	17 413	35 290	6 819	21 549	79 714	58 788	59 244	306 685
February	11 547	31 555	29 787	7 365	19 685	64 636	68 690	56 340	301 931
March	16 139	26 963	29 953	7 781	23 341	71 981	77 960	79 682	349 081
April	12 634	25 605	34 573	8 490	22 618	67 983	73 157	57 689	314 918
May	9 428	27 844	24 936	8 295	18 214	75 412	49 334	56 039	283 402
June	12 738	22 304	15 461	7 486	19 168	72 189	67 553	71 936	301 380
<b>1999-00</b>									
July	14 868	56 018	16 549	8 470	19 122	81 901	78 756	64 816	353 204

(a) Goods released from Customs control in South Australia.

Source: Unpublished data, International Merchandise Trade.

## 9

## TURNOVER OF RETAIL ESTABLISHMENTS, BY INDUSTRY—TREND

Period	Food retailing	Department stores	Clothing and soft good retailing	Household good retailing	Recreational good retailing	Other retailing	Hospitality and services	Total
	\$m	\$m	\$m	\$m	\$m	\$m	\$m	\$m
<b>1997-98</b>								
May	372.9	92.1	45.1	86.9	32.2	75.8	124.0	828.4
June	374.8	92.2	45.7	87.6	32.6	75.5	127.0	831.6
<b>1998-99</b>								
July	377.0	92.0	46.3	80.1	32.7	75.2	128.8	834.8
August	379.5	91.9	46.6	80.9	32.6	75.2	129.4	837.7
September	382.1	91.6	46.5	81.6	32.3	75.6	128.7	838.8
October	385.3	91.4	46.1	82.4	32.0	76.4	127.2	840.3
November	388.8	91.3	45.7	83.1	31.8	77.5	125.6	843.0
December	392.5	91.3	45.5	83.4	31.8	78.6	124.6	846.3
January	395.1	91.5	45.8	83.6	27.3	79.3	124.4	848.7
February	395.8	91.7	46.5	83.4	27.7	79.6	125.2	849.0
March	394.7	91.5	47.5	83.1	27.7	79.7	126.7	847.3
April	382.5	91.2	48.4	82.8	27.7	79.6	128.1	844.2
May	380.2	90.8	49.0	82.8	27.4	79.6	129.1	840.5
June	377.8	90.4	49.5	83.2	27.3	79.6	129.9	837.5
<b>1999-00</b>								
July	375.3	89.9	49.9	83.3	26.9	79.8	130.4	833.0

Source: Retail Trade, Australia (Cat. no. 8501.0).

## 10

## NEW MOTOR VEHICLE REGISTRATIONS, BY TYPE OF VEHICLE

Period	Original			Seasonally adjusted			Trend estimate		
	Passenger vehicles	Other vehicles	Total	Passenger vehicles	Other vehicles	Total	Passenger vehicles	Other vehicles	Total
<b>1997-98</b>									
May	3 693	686	4 379	4 005	647	4 653	3 937	668	4 605
June	4 889	872	5 761	4 172	632	4 804	4 009	670	4 679
<b>1998-99</b>									
July	4 411	681	5 092	4 233	678	4 911	3 992	673	4 665
August	3 864	676	4 540	3 837	751	4 588	3 893	675	4 569
September	3 569	597	4 166	3 471	632	4 102	3 744	676	4 419
October	3 677	560	4 237	3 609	623	4 232	3 605	670	4 275
November	3 803	672	4 475	3 635	705	4 340	3 522	657	4 179
December	3 624	718	4 342	3 425	666	4 091	3 506	638	4 144
January	2 603	442	3 045	3 512	599	4 111	3 537	618	4 155
February	3 355	568	3 923	3 428	610	4 038	3 571	603	4 174
March	4 165	644	4 809	3 820	552	4 372	3 579	596	4 175
April	3 256	559	3 815	3 626	597	4 223	3 563	601	4 164
May	3 294	672	3 966	3 535	633	4 168	3 527	615	4 142
June	3 838	856	4 694	3 347	601	3 948	3 480	634	4 114
<b>1999-00</b>									
July	3 428	689	4 117	3 378	718	4 096	3 425	657	4 082

Source: Transport SA.

# 11

## ACTUAL PRIVATE NEW CAPITAL EXPENDITURE, BY SELECTED INDUSTRY AND TYPE OF ASSET

Period	Industry			Total	Type of asset	
	Mining	Manufacturing	Other selected industries		New buildings and structures	Equipment, plant and machinery
ANNUAL (\$m)						
<b>1996-97</b>	489	840	1 251	2 580	595	1 985
<b>1997-98</b>	1 366	820	1 006	3 192	792	2 400
<b>1998-99</b>	508	776	992	2 277	527	1 749
QUARTERLY, ORIGINAL (\$m)						
<b>1997-98</b>						
March	360	168	193	721	188	534
June	215	217	370	802	250	552
<b>1998-99</b>						
September	125	153	326	603	158	445
December	150	248	266	664	171	493
March	98	187	220	505	97	407
June	136	188	180	504	101	403
QUARTERLY, TREND (\$m)						
<b>1997-98</b>						
March	n.a.	n.a.	n.a.	816	212	604
June	n.a.	n.a.	n.a.	754	213	541
<b>1998-99</b>						
September	n.a.	n.a.	n.a.	673	186	487
December	n.a.	n.a.	n.a.	600	147	453
March	n.a.	n.a.	n.a.	544	117	427
June	n.a.	n.a.	n.a.	503	100	403

Source: State Estimates of Private New Capital Expenditure (Cat. no. 5646.0).

# 12

## TOURIST ACCOMMODATION

Period	Hotels with facilities				Motels and guesthouses				Serviced apartments			
	Estab-lish-ments	Guest rooms	Room occu-pancy	Takings	Estab-lish-ments	Flats, units and houses	Room occu-pancy	Takings	Estab-lish-ments	Guest rooms	Room occu-pancy	Takings
	no.	no.	%	\$'000	no.	no.	%	\$'000	no.	no.	%	\$'000
<b>1997-98</b>												
September	62	3 875	56.2	19 193	150	5 179	51.3	17 420	17	624	57.9	2 714
December	61	3 855	61.3	22 156	151	5 225	57.9	19 960	17	626	67.3	3 269
March	59	3 808	60.1	20 851	149	5 181	57.4	19 247	19	726	67.6	3 913
June	61	4 048	53.6	19 048	147	5 136	52.8	17 773	19	750	59.4	3 551
<b>1998-99</b>												
September	61	4 048	57.2	21 068	146	5 112	51.7	17 805	19	740	56.3	3 667
December	61	4 053	63.0	24 954	146	5 135	58.1	19 990	22	888	66.0	4 884
March	61	4 053	59.6	22 181	145	5 119	55.3	18 793	22	888	65.8	4 516

Source: Tourist Accommodation, Australia (Cat. no. 8635.0).

Period	Houses		Total dwelling units		New residential building \$m	Alterations and additions to residential building \$m	Total residential building \$m	Non-residential building \$m	Total building \$m
	Private sector	Total	Private sector	Total					
	no.	no.	no.	no.					
ANNUAL									
<b>1996-97</b>	5 512	5 608	6 148	6 264	515.5	116.6	632.1	580.7	1 212.8
<b>1997-98</b>	6 187	6 380	6 997	7 215	630.2	127.8	758.0	602.2	1 360.1
<b>1998-99</b>	6 568	6 777	7 697	7 928	775.6	143.9	919.6	656.6	1 576.2
MONTHLY, ORIGINAL									
<b>1998-99</b>									
July	654	660	893	901	78.6	11.8	90.4	40.2	130.6
August	528	536	622	634	58.5	10.6	69.1	72.1	141.2
September	600	625	717	742	103.4	13.1	116.5	46.9	163.5
October	518	542	561	585	55.5	10.8	66.3	40.5	106.9
November	540	553	587	606	58.0	12.4	70.4	58.3	128.7
December	489	496	556	563	50.3	10.0	60.3	53.5	113.7
January	361	371	434	444	45.6	9.5	55.1	68.0	123.1
February	494	510	591	607	58.2	12.4	70.6	118.4	189.0
March	644	683	711	750	69.1	14.6	83.7	56.1	139.8
April	487	497	558	568	56.6	10.8	67.4	22.7	90.1
May	601	631	653	683	69.5	11.4	80.9	53.3	134.2
June	652	673	814	845	72.3	16.5	88.8	26.5	115.3
<b>1999-00</b>									
July	615	620	837	842	101.8	14.1	115.9	24.1	140.0
MONTHLY, TREND									
<b>1998-99</b>									
July	535	551	660	676	60.6	10.6	71.1	46.9	118.0
August	537	554	650	667	59.6	10.7	70.2	51.8	122.0
September	539	557	632	652	58.2	10.7	68.9	57.5	126.5
October	537	556	611	633	56.9	10.9	67.8	62.2	130.0
November	534	553	597	620	56.4	11.2	67.6	64.3	131.8
December	530	548	597	620	57.3	11.5	68.8	63.8	132.6
January	531	549	606	629	59.0	11.9	70.8	61.3	132.2
February	537	555	620	642	61.2	12.3	73.4	56.9	130.3
March	546	565	635	656	63.7	12.7	76.4	51.3	127.7
April	557	576	653	673	66.9	13.1	80.0	44.6	124.6
May	566	584	676	694	70.6	13.5	84.1	38.2	122.3
June	573	590	700	716	74.6	14.0	88.6	32.4	121.0
<b>1999-00</b>									
July	577	592	723	736	78.2	14.3	92.5	27.8	120.3

Source: Building Approvals, South Australia (Cat. no. 8731.4).



## 14

## BUILDING COMMENCEMENTS

Period	New houses		Total dwelling units(a)		New residential building \$m	Alterations and additions to residential building \$m	Non-residential building		
	Private sector	Total	Private sector	Total			Private sector	Total	Total building
	no.	no.	no.	no.			\$m	\$m	\$m
<b>1995-96</b>	4 837	5 071	5 691	5 960	496.5	121.7	452.8	631.8	1 250.0
<b>1996-97</b>	5 057	5 112	5 727	5 789	496.3	116.9	423.4	568.8	1 181.9
<b>1997-98</b>	5 628	5 823	6 437	6 653	614.7	134.5	419.0	550.7	1 299.9
<b>1996-97</b>									
March	1 099	1 102	1 242	1 247	106.3	26.2	76.6	121.2	253.6
June	1 522	1 541	1 670	1 691	147.5	30.7	193.5	230.2	408.4
<b>1997-98</b>									
September	1 354	1 402	1 489	1 541	131.9	31.6	84.5	112.3	275.8
December	1 531	1 588	1 841	1 906	179.8	33.8	139.2	174.1	387.7
March	1 409	1 436	1 617	1 648	150.1	38.7	68.1	95.2	284.0
June	1 334	1 397	1 490	1 558	152.9	30.4	134.5	169.1	352.4
<b>1998-99</b>									
September	1 563	1 610	1 927	1 980	184.7	35.0	89.5	131.1	350.7
December	1 644	1 699	1 891	1 965	231.1	34.3	94.6	134.8	400.2
March	1 292	1 325	1 603	1 636	170.4	32.7	140.6	230.6	433.6

(a) Includes conversions.

Source: *Building Activity, South Australia* (Cat. no. 8752.4).

## VALUE OF BUILDING WORK DONE AND COMPLETED DURING PERIOD

Period	New houses		New residential building			Non-residential building		Total building		
	Private sector	Total	Private sector	Total	Alterations and additions to residential building	Total residential building	Private sector	Total	Private sector	Total
	\$m	\$m	\$m	\$m	\$m	\$m	\$m	\$m	\$m	\$m
VALUE OF BUILDING WORK DONE										
<b>1995-96</b>	441.4	460.5	512.9	534.8	130.6	665.4	311.4	542.1	953.2	1 207.5
<b>1996-97</b>	433.9	438.9	485.2	490.4	122.3	612.7	444.2	663.3	1 049.8	1 275.9
<b>1997-98</b>	522.9	535.7	590.4	605.4	131.6	737.0	538.9	685.0	1 259.3	1 422.0
<b>1996-97</b>										
March	99.9	100.3	114.1	114.6	26.8	141.4	100.8	147.8	241.6	289.2
June	127.6	128.7	140.5	141.7	32.0	173.7	140.4	181.9	312.8	355.6
<b>1997-98</b>										
September	122.5	125.8	136.3	139.9	32.9	172.8	149.8	186.7	318.5	359.4
December	134.0	137.7	152.3	157.1	36.2	193.3	157.7	197.7	345.2	391.0
March	130.5	132.8	147.4	149.9	31.4	181.3	119.1	149.2	297.7	330.4
June	135.9	139.4	154.5	158.5	31.2	189.7	112.3	151.5	297.9	341.1
<b>1998-99</b>										
September	150.9	155.8	175.8	180.9	39.8	220.7	135.5	162.9	350.5	383.6
December	151.4	155.1	185.6	189.9	39.9	230.1	121.5	160.4	347.0	390.6
March	142.3	144.8	168.4	171.4	33.1	204.7	84.5	130.3	286.1	335.0
VALUE OF BUILDING WORK COMPLETED										
<b>1995-96</b>	459.9	481.8	530.9	556.5	132.0	688.6	292.8	494.4	953.9	1 183.0
<b>1996-97</b>	408.9	414.1	461.8	467.1	123.6	590.7	328.2	584.3	911.8	1 175.0
<b>1997-98</b>	504.1	514.7	561.8	574.7	125.0	699.7	571.2	744.0	1 256.3	1 443.7
<b>1996-97</b>										
March	94.9	95.7	108.3	109.2	25.3	134.5	92.6	134.9	226.2	269.4
June	119.7	120.4	130.5	131.1	32.6	163.7	86.4	228.5	249.5	392.2
<b>1997-98</b>										
September	118.3	120.5	130.5	132.7	34.3	166.9	68.9	102.6	233.1	269.5
December	148.3	151.6	168.9	172.8	39.2	212.1	310.5	369.2	517.7	581.2
March	112.2	114.5	126.4	129.3	26.9	156.3	81.7	124.3	235.0	280.5
June	125.3	128.1	136.0	139.8	24.6	164.4	110.1	148.0	270.6	312.5
<b>1998-99</b>										
September	148.1	152.4	161.1	165.8	36.1	201.9	68.2	106.7	264.9	308.6
December	168.4	174.1	190.2	196.1	49.0	245.4	174.9	203.3	414.1	448.7
March	144.4	146.9	179.3	182.3	36.0	218.6	160.3	203.7	375.7	422.3

Source: Building Activity, South Australia (Cat. no. 8752.4).

<i>Period</i>	<i>Pigmeat</i>	<i>Beef</i>	<i>Mutton</i>	<i>Lamb</i>	<i>Gas</i>	<i>Coal(a)</i>	<i>Sawn timber(b)</i>
	<i>tonnes</i>	<i>tonnes</i>	<i>tonnes</i>	<i>tonnes</i>	<i>m MJ</i>	<i>tonnes</i>	<i>m<sup>3</sup></i>
<b>1996-97</b>	29 842	85 478	51 778	34 890	76 495	2 633 820	333 691
<b>1997-98</b>	26 384	80 924	58 554	38 224	78 441	2 815 870	361 257
<b>1998-99</b>	25 203	61 873	47 780	43 449	86 228	2 686 069	374 590
<b>1997-98</b>							
September	7 431	18 704	10 889	6 594	21 942	752 868	91 537
December	6 301	22 324	16 769	9 963	18 997	610 208	83 957
March	6 731	21 110	20 144	10 561	18 098	718 990	89 540
June	5 921	18 786	10 752	11 106	19 404	733 804	96 223
<b>1998-99</b>							
September	5 253	15 129	10 342	10 733	23 573	748 575	95 339
December	4 646	17 514	15 721	10 982	19 718	671 040	94 578
March	6 332	14 686	14 013	10 086	19 343	826 095	88 282
June	8 972	14 544	7 704	11 648	23 594	440 359	96 391

(a) Data supplied by Flinders Power Pty Ltd.

(b) From Australian softwood logs only.

Source: *Livestock Products, Australia (Cat. no. 8752.4); Unpublished data, Manufacturing Production.*

<i>Period</i>	<i>Food</i>	<i>Clothing</i>	<i>Housing</i>	<i>Household equipment and operation</i>	<i>Transport- ation</i>	<i>Tobacco and alcohol</i>	<i>Health and personal care</i>	<i>Recreation and education</i>	<i>All groups</i>
ANNUAL AVERAGE (1989-90 = 100.0)									
<b>1996-97</b>	120.8	105.5	98.9	113.4	124.6	165.3	165.4	121.1	122.3
<b>1997-98</b>	122.7	105.7	90.7	113.7	122.1	169.3	165.4	124.7	121.6
<b>1998-99</b>	127.7	105.0	92.0	113.3	121.6	171.8	164.2	127.5	123.2
QUARTERLY (1989-90 = 100.0)									
<b>1997-98</b>									
March	122.9	105.1	89.9	113.7	121.2	170.7	167.8	125.5	121.7
June	123.7	105.9	90.3	113.9	121.8	170.5	171.1	126.1	122.4
<b>1998-99</b>									
September	125.9	105.3	91.2	113.7	121.8	170.7	171.8	125.9	123.0
December	128.2	105.4	91.9	113.9	121.3	171.4	170.9	126.5	123.6
March	128.0	103.7	92.2	112.3	120.9	171.8	156.6	128.6	122.7
June	128.8	105.7	92.8	113.2	122.4	173.3	157.5	128.9	123.6
PERCENTAGE CHANGE FROM SAME QUARTER OF PREVIOUS YEAR									
<b>1997-98</b>									
March	1.4	0.0	-7.8	0.4	-3.5	3.3	0.1	2.6	-0.7
June	1.5	0.7	-4.0	0.3	-0.7	2.4	1.8	2.6	0.4
<b>1998-99</b>									
September	3.2	-0.1	-1.1	0.1	-1.1	2.1	8.3	1.8	1.5
December	5.1	-0.8	1.9	0.3	-0.8	1.5	4.1	2.3	2.0
March	4.1	-1.3	2.6	-1.2	-0.2	0.6	-6.7	2.5	0.8
June	4.1	-0.2	2.8	-0.6	0.5	1.6	-7.9	2.2	1.0
PERCENTAGE CHANGE FROM PREVIOUS QUARTER									
<b>1997-98</b>									
March	0.7	-1.0	-0.3	0.1	-0.9	1.1	2.3	1.5	0.4
June	0.7	0.8	0.4	0.2	0.5	-0.1	2.0	0.5	0.6
<b>1998-99</b>									
September	1.8	-0.6	1.0	-0.2	0.0	0.1	0.4	-0.2	0.5
December	1.8	0.1	0.8	0.2	-0.4	0.4	-0.5	0.5	0.5
March	-0.2	-1.6	0.3	-1.4	-0.3	0.2	-8.4	1.7	-0.7
June	0.6	1.9	0.7	0.8	1.2	0.9	0.6	0.2	0.7

Source: Consumer Price Index (Cat. no. 6401.0).

# 18

## ESTIMATED RESIDENT POPULATION AND COMPONENTS OF POPULATION CHANGE

Period	Net migration			Total increase	Population at end of period
	Natural increase	Interstate	Overseas(a)		
<b>1995-96</b>	7 500	-6 192	3 653	4 824	1 474 253
<b>1996-97</b>	6 951	-4 628	3 104	5 427	1 479 680
<b>1997-98</b>	6 574	-3 254	4 294	7 614	1 487 294
<b>1996-97</b>					
June	1 672	-862	136	946	1 479 680
<b>1997-98</b>					
September	1 322	-755	1 124	1 691	1 481 371
December	1 544	-1 098	598	1 044	1 482 415
March	2 083	-591	2 027	3 519	1 485 934
June	1 625	-810	545	1 360	1 487 294
<b>1998-99</b>					
September	1 188	-422	778	1 544	1 488 838
December	1 775	-901	707	1 581	1 490 419
March	1 917	-682	1 149	2 384	1 491 127

(a) Includes category jumping.

Source: Australian Demographic Statistics (Cat. no. 3101.0).

# 19

## BIRTHS, DEATHS, MARRIAGES AND DIVORCES

Period	Registrations			
	Births	Deaths	Marriages	Divorces
<b>1995-96</b>	18 839	11 339	8 211	4 236
<b>1996-97</b>	18 576	11 625	8 003	4 362
<b>1997-98</b>	18 006	11 432	7 988	4 113
<b>1996-97</b>				
June	4 586	2 914	1 750	1 005
<b>1997-98</b>				
September	4 542	3 220	1 079	1 034
December	4 487	2 943	2 680	1 058
March	4 557	2 474	2 405	1 016
June	4 420	2 795	1 824	1 005
<b>1998-99</b>				
September	4 648	3 460	1 294	1 053
December	4 545	2 770	2 499	1 085
March	4 490	2 573	2 471	929

Source: Australian Demographic Statistics (Cat. no. 3101.0).

Period	Employed full-time		Employed part-time		Total employed		Unemployed		Labour force	
	Males	Females	Males	Females	Males	Females	Males	Females	Males	Females
ANNUAL AVERAGE ('000)										
<b>1996-97</b>	320.8	150.5	48.6	140.7	369.4	291.2	42.1	27.5	411.5	318.7
<b>1997-98</b>	317.5	145.9	48.8	136.4	366.3	282.3	42.1	28.8	408.4	311.0
<b>1998-99</b>	319.4	148.1	49.2	136.2	368.6	284.3	40.2	26.6	408.8	310.9
MONTHLY, ORIGINAL ('000)										
<b>1997-98</b>										
June	314.2	140.8	49.7	131.8	363.9	272.5	38.7	29.2	402.6	301.7
<b>1998-99</b>										
July	317.9	145.3	44.6	128.0	362.5	273.3	42.3	26.5	404.8	299.8
August	316.6	144.1	47.0	131.1	363.6	275.2	42.6	29.1	406.2	304.3
September	322.6	147.7	44.7	136.6	367.3	284.3	44.6	27.4	411.9	311.7
October	318.8	148.8	47.1	137.7	366.0	286.4	40.5	24.1	406.5	310.5
November	320.5	147.1	46.6	139.0	367.1	286.1	42.7	25.2	409.8	311.4
December	323.6	150.8	51.0	141.7	374.6	292.5	42.1	24.7	416.6	317.3
January	315.4	147.2	49.5	131.2	364.9	278.4	45.4	29.5	410.3	308.0
February	320.7	150.6	51.1	134.4	371.8	285.0	40.6	28.3	412.4	313.3
March	322.9	147.4	48.0	141.1	370.8	288.5	38.6	27.7	409.4	316.2
April	316.4	149.2	50.9	138.6	367.4	287.8	35.2	24.0	402.5	311.8
May	318.6	152.9	53.7	132.8	372.3	285.7	36.6	27.2	408.9	312.9
June	319.3	146.3	55.9	141.8	375.3	288.1	31.0	25.0	406.3	313.1
<b>1999-00</b>										
July	320.3	152.1	53.7	137.4	374.0	289.5	30.7	23.6	404.7	313.1
August	315.4	151.1	56.0	137.4	371.3	288.5	36.5	24.5	407.9	313.0
MONTHLY, TREND ('000)										
<b>1997-98</b>										
June	315.5	144.9	47.7	129.0	363.2	273.9	42.1	29.7	405.3	303.6
<b>1998-99</b>										
July	316.7	145.3	47.0	129.7	363.7	275.0	42.6	29.4	406.3	304.4
August	317.8	146.0	46.7	131.4	364.5	277.4	43.0	28.7	407.5	306.1
September	318.3	146.7	47.1	133.9	365.4	280.6	43.2	27.8	408.6	308.4
October	318.5	147.2	47.9	136.4	366.4	283.6	43.0	26.9	409.4	310.5
November	318.5	147.2	48.9	138.8	367.4	286.0	42.5	26.2	409.9	312.2
December	318.7	147.2	49.6	139.9	368.2	287.2	41.8	25.8	410.0	312.9
January	319.4	147.5	49.6	140.0	369.0	287.5	40.8	25.6	409.8	313.1
February	320.3	148.2	49.5	139.0	369.8	287.2	39.5	25.7	409.3	312.9
March	321.1	149.1	49.6	137.7	370.7	286.8	38.0	25.8	408.7	312.6
April	321.3	150.0	50.3	136.7	371.6	286.7	36.5	25.8	408.1	312.5
May	320.8	150.8	51.7	136.2	372.5	287.0	35.4	25.8	407.9	312.8
June	319.9	151.5	53.3	135.5	373.2	287.0	34.7	25.8	407.9	312.8
<b>1999-00</b>										
July	319.0	152.1	54.8	135.4	373.8	287.5	34.2	25.8	408.0	313.3
August	317.8	152.5	56.2	136.5	374.0	289.0	34.1	25.8	408.1	314.8

(a) Population aged 15 and over.

Source: Labour Force, Australia, Preliminary (Cat. no. 6202.0).

# 21

## CIVILIAN LABOUR FORCE, UNEMPLOYMENT AND PARTICIPATION RATES(a)

Period	Civilian population			Unemployment rate			Participation rate		
	Males aged 15 and over	Females aged 15 and over	Persons aged 15-19	Males all ages	Females all ages	Persons all ages	Males	Females	Persons
	'000	'000	%	%	%	%	%	%	%
ANNUAL AVERAGE									
<b>1996-97</b>	579.8	600.6	23.7	10.2	8.6	9.5	71.0	53.1	61.9
<b>1997-98</b>	583.9	604.5	23.2	10.3	9.2	9.8	70.8	51.5	61.0
<b>1998-99</b>	583.2	609.8	21.7	9.8	8.6	9.3	70.1	51.0	60.3
MONTHLY, ORIGINAL									
<b>1997-98</b>									
June	580.7	607.3	19.9	9.6	9.7	9.6	69.3	49.7	59.3
<b>1998-99</b>									
July	581.1	607.7	23.0	10.5	8.8	9.8	69.7	49.3	59.3
August	581.4	608.0	23.3	10.5	9.6	10.1	69.9	50.0	59.7
September	581.7	608.4	23.1	10.8	8.8	9.9	70.8	51.2	60.8
October	582.2	608.8	23.1	10.0	7.8	9.0	69.8	51.0	60.2
November	582.6	609.2	21.2	10.4	8.1	9.4	70.3	51.1	60.5
December	583.0	609.7	19.8	10.1	7.8	9.1	71.5	52.0	61.5
January	583.4	610.1	20.1	11.1	9.6	10.4	70.3	50.5	60.2
February	583.8	610.5	20.4	9.8	9.0	9.5	70.6	51.3	60.8
March	584.2	610.9	21.8	9.4	8.8	9.1	70.1	51.8	60.7
April	584.6	611.3	17.9	8.7	7.7	8.3	68.9	51.0	59.7
May	585.0	611.6	24.8	8.9	8.7	8.8	69.9	51.2	60.3
June	585.3	611.9	21.6	7.6	8.0	7.8	69.4	51.2	60.1
<b>1999-00</b>									
July	585.7	612.3	21.4	7.6	7.5	7.6	69.1	51.1	59.9
August	586.0	612.6	22.1	9.0	7.8	8.5	69.6	51.1	60.1
MONTHLY, TREND									
<b>1997-98</b>									
June	n.a.	n.a.	n.a.	10.4	9.8	10.1	69.8	50.0	59.7
<b>1998-99</b>									
July	n.a.	n.a.	n.a.	10.5	9.6	10.1	69.9	50.1	59.8
August	n.a.	n.a.	n.a.	10.6	9.4	10.0	70.1	50.3	60.0
September	n.a.	n.a.	n.a.	10.6	9.0	9.9	70.2	50.7	60.2
October	n.a.	n.a.	n.a.	10.5	8.7	9.7	70.3	51.0	60.5
November	n.a.	n.a.	n.a.	10.4	8.4	9.5	70.4	51.2	60.6
December	n.a.	n.a.	n.a.	10.2	8.2	9.4	70.3	51.3	60.6
January	n.a.	n.a.	n.a.	10.0	8.2	9.2	70.2	51.3	60.6
February	n.a.	n.a.	n.a.	9.7	8.2	9.0	70.1	51.2	60.5
March	n.a.	n.a.	n.a.	9.3	8.2	8.8	70.0	51.2	60.4
April	n.a.	n.a.	n.a.	8.9	8.2	8.6	69.8	51.1	60.3
May	n.a.	n.a.	n.a.	8.7	8.2	8.5	69.7	51.1	60.2
June	n.a.	n.a.	n.a.	8.5	8.2	8.4	69.7	51.2	60.2
<b>1999-00</b>									
July	n.a.	n.a.	n.a.	8.4	8.2	8.3	69.7	51.3	60.3
August	n.a.	n.a.	n.a.	8.4	8.2	8.3	69.6	51.4	60.3

(a) Population aged 15 and over.

Source: Labour Force, Australia, Preliminary (Cat. no. 6202.0).

## AVERAGE WEEKLY EARNINGS OF EMPLOYEES

Period	Males			Females			Persons		
	Full-time adult ordinary time earnings	Full-time adult total earnings	All males total earnings	Full-time adult ordinary time earnings	Full-time adult total earnings	All females total earnings	Full-time adult ordinary time earnings	Full-time adult total earnings	All employees total earnings
ANNUAL AVERAGE (\$ per week)									
<b>1996-97</b>	678.20	735.10	636.90	575.10	589.40	408.70	644.30	687.20	529.80
<b>1997-98</b>	705.60	755.05	646.28	606.05	619.33	438.50	670.53	707.20	545.70
<b>1998-99</b>	741.20	797.55	678.28	627.93	647.28	464.35	699.13	741.70	575.23
QUARTERLY, ORIGINAL (\$ per week)									
<b>1997-98</b>									
20 February	715.10	764.60	656.10	626.20	642.10	447.70	683.60	721.20	553.60
15 May	713.80	759.50	646.30	620.10	634.30	452.40	680.10	714.40	552.80
<b>1998-99</b>									
21 August	737.50	785.60	670.40	623.50	636.30	462.10	694.70	729.60	569.60
20 November	745.20	811.60	679.00	631.50	652.90	471.50	702.50	752.00	580.30
19 February	739.90	796.20	677.40	632.00	651.90	466.50	699.60	742.30	574.90
21 May	742.20	796.80	686.30	624.70	648.00	457.30	699.70	742.90	576.10
QUARTERLY, TREND (\$ per week)									
<b>1997-98</b>									
20 February	707.10	753.40	643.70	613.90	627.50	444.10	673.50	708.20	545.60
15 May	720.20	768.70	653.80	623.20	638.00	454.20	684.90	720.80	556.70
<b>1998-99</b>									
21 August	734.30	788.10	668.30	627.90	643.90	463.80	694.90	734.60	570.10
20 November	741.20	798.30	677.20	629.10	647.10	467.80	699.10	741.70	576.60
19 February	743.20	800.50	680.20	629.00	649.50	465.40	700.50	744.30	576.50
21 May	741.80	797.60	679.40	626.10	649.10	458.90	699.40	742.90	572.70

Source: Average Weekly Earnings, States and Australia (Cat. no. 6302.0).



## 23

### SECURED HOUSING FINANCE COMMITMENTS

Period	Original		Seasonally adjusted		Trend	
	Dwelling units	Value	Dwelling units	Value	Dwelling units	Value
	no.	\$m	no.	\$m	no.	\$m
<b>1997-98</b>						
May	3 054	258.0	3 157	264.0	3 175	267.0
June	3 581	307.0	3 288	283.0	3 146	266.0
<b>1998-99</b>						
July	3 144	269.0	3 117	266.0	3 076	262.0
August	2 787	233.0	2 985	249.0	2 987	258.0
September	2 807	242.0	2 807	245.0	2 911	255.0
October	2 685	238.0	2 740	247.0	2 871	256.0
November	3 000	278.0	2 879	267.0	2 879	261.0
December	3 151	294.0	3 153	290.0	2 927	267.0
January	2 392	216.0	2 850	259.0	2 995	274.0
February	3 019	274.0	3 073	279.0	3 067	281.0
March	3 718	344.0	3 182	292.0	3 138	288.0
April	3 162	290.0	3 175	290.0	3 210	296.0
May	3 237	301.0	3 303	305.0	3 289	306.0
June	3 592	342.0	3 320	318.0	3 364	315.0
<b>1999-00</b>						
July	3 392	319.0	3 532	330.0	3 444	324.0

Source: Housing Finance for Owner Occupation, Australia (Cat. no. 5609.0).

## 24

### FINANCE COMMITMENTS

Period	Commercial finance commitments			Personal finance commitments			Total lease finance commitments
	Fixed loan facilities	Revolving credit facilities	Total commercial finance commitments	Fixed loan facilities	Revolving credit facilities	Total personal finance commitments	
	\$m	\$m	\$m	\$m	\$m	\$m	
<b>1997-98</b>							
May	299.6	156.7	456.3	114.6	121.0	235.6	23.0
June	432.7	346.6	779.2	126.5	139.5	265.9	37.5
<b>1998-99</b>							
July	317.0	188.2	505.2	116.0	133.6	249.6	32.3
August	258.0	232.4	490.4	103.9	144.2	248.1	15.5
September	362.1	306.9	669.0	117.2	131.7	248.8	16.4
October	275.6	181.7	457.3	108.8	128.2	237.0	15.3
November	355.3	166.0	521.2	116.2	140.0	256.2	22.6
December	305.8	268.2	574.0	119.0	155.1	274.2	17.4
January	189.3	120.6	309.9	119.0	117.6	236.6	21.8
February	288.2	199.0	487.3	122.3	133.2	255.5	19.3
March	489.8	390.3	880.1	147.2	174.1	321.3	24.6
April	268.6	459.1	727.7	113.0	158.9	271.9	32.8
May	272.4	202.3	474.7	120.9	146.9	267.8	39.3
June	356.6	382.2	738.9	135.0	169.5	304.4	40.6
<b>1999-00</b>							
July	252.8	261.3	514.1	122.6	139.0	261.6	23.4

Source: Unpublished data, PC Ausstats.

## PUBLICATIONS SOURCE INDEX

- (1) *Australian National Accounts, Quarterly State Details*  
(Cat. no. 5206.0.40.001)
- (2) *International Merchandise Trade, Australia*  
(Cat. no. 5422.0) Quarterly
- (3) *Retail Trade, Australia* (Cat. no. 8501.0) Monthly
- (4) *New Motor Vehicles Registrations, Australia, Preliminary*  
(Cat. no. 9301.0) Monthly
- (5) *State Estimates of Private New Capital Expenditure*  
(Cat. no. 5646.0) Quarterly
- (6) *Tourist Accommodation, Australia* (Cat. no. 8635.0) Quarterly
- (7) *Building Approvals, Australia* (Cat. no. 8731.0) Monthly
- (8) *Building Activity, Australia* (Cat. no. 8752.0) Quarterly
- (8a) *Building Activity, Australia, Dwelling Unit Commencements, Preliminary* (Cat. no. 8750.0) Quarterly
- (9) *Engineering Construction Activity, Australia*  
(Cat. no. 8762.0) Quarterly
- (10) *Manufacturing Production, Australia, Preliminary*  
(Cat. no. 8301.0) Quarterly
- (11) *Livestock Products, Australia* (Cat. no. 7215.0) Quarterly
- (12) *Actual and Expected Private Mineral Exploration, Australia*  
(Cat. no. 8412.0) Quarterly
- (13) *Consumer Price Index* (Cat. no. 6401.0) Quarterly
- (14) *Price Index of Materials Used in House Building, Six State Capital Cities and Canberra* (Cat. no. 6408.0) Quarterly
- (15) *Price Index of Materials Used in Building Other Than House Building, Six State Capital Cities and Canberra*  
(Cat. no. 6407.0) Quarterly
- (16) *House Price Indexes: Eight Capital Cities*  
(Cat. no. 6416.0) Quarterly
- (17) *Australian Demographic Statistics* (Cat. no. 3101.0) Quarterly
- (18) *Labour Force, Australia, Preliminary* (Cat. no. 6202.0) Monthly
- (19) *Job Vacancies and Overtime, Australia*  
(Cat. no. 6354.0) Quarterly
- (20) *Industrial Disputes, Australia* (Cat. no. 6321.0) Monthly
- (21) Unpublished overseas arrival and departure statistics
- (22) *Average Weekly Earnings, States and Australia*  
(Cat. no. 6302.0) Quarterly
- (23) *Wage Cost Index, Australia* (Cat. no. 6345.0) Quarterly
- (24) *Housing Finance for Owner Occupation, Australia*  
(Cat. no. 5609.0) Monthly
- (25) Unpublished statistics available from PC AUSSTATS
- (26) *Reserve Bank of Australia Bulletin*



## SELF-HELP ACCESS TO STATISTICS

- CPI INFOLINE* For current and historical Consumer Price Index data, call 1902 981 074 (call cost 75c per minute).
- DIAL-A-STATISTIC* For the latest figures for National Accounts, Balance of Payments, Labour Force, Average Weekly Earnings, Estimated Resident Population and the Consumer Price Index call 1900 986 400 (call cost 75c per minute).
- INTERNET* [www.abs.gov.au](http://www.abs.gov.au)
- LIBRARY* A range of ABS publications is available from public and tertiary libraries Australia-wide. Contact your nearest library to determine whether it has the ABS statistics you require.

## WHY NOT SUBSCRIBE?

- PHONE* +61 1300 366 323
- FAX* +61 03 9615 7848

## CONSULTANCY SERVICES

ABS offers consultancy services on a user pays basis to help you access published and unpublished data. Data that is already published and can be provided within 5 minutes is free of charge. Statistical methodological services are also available. Please contact:

<i>INQUIRIES</i>	<i>City</i>	<i>By phone</i>	<i>By fax</i>
	Canberra	02 6252 6627	02 6207 0282
	Sydney	02 9268 4611	02 9268 4668
	Melbourne	03 9615 7755	03 9615 7798
	Brisbane	07 3222 6351	07 3222 6283
	Perth	08 9360 5140	08 9360 5955
	Adelaide	08 8237 7400	08 8237 7566
	Hobart	03 6222 5800	03 6222 5995
	Darwin	08 8943 2111	08 8981 1218

*POST* Client Services, ABS, PO Box 10, Belconnen ACT 2616

*EMAIL* [client.services@abs.gov.au](mailto:client.services@abs.gov.au)



2130740010996  
ISSN 1039-8880

RRP \$17.00